

## GST

SUN

10

- GSTR - 7  
(Monthly) Summary  
- TDS & payment

- GSTR - 8  
(Monthly) Summary  
- TCS & payment

MON

11

GSTR - 1 (Monthly)  
Summary -O/s -  
turnover > Rs.5  
crore or Non-QRMP  
scheme.

WED

13

-GSTR-6 (Monthly) -  
ITC received /  
distributed by ISD

-IFF (Invoice  
Furnishing  
Facility) - Mar 2022 -  
QRMP scheme.

MON

18

CMP-08 (Quarterly) -

Challan-cum-Statement  
to be furnished by  
Composition dealers

WED

20

- -GSTR-3B (Monthly)  
Summary of Outward  
Supplies, ITC Claimed  
and Net Tax Payable -  
Turnover > Rs. 5 crore  
in the last FY or  
Non-QRMP scheme
- -GSTR-5 (Monthly)  
Summary of Outward  
Taxable Supplies &  
tax payable by  
Non-resident taxable  
person.
- -GSTR - 5A (Monthly)  
Summary of Outward  
Taxable Supplies &  
tax payable by OIDAR

FRI

22

GSTR-3B  
(QRMP-Quarterly)

Summary of Outward  
Supplies, ITC  
Claimed and Net Tax  
Payable by taxpayer  
who opted for QRMP  
Schemes - Southern  
States

SUN

24

GSTR-3B  
(QRMP-Quarterly)

Summary of Outward  
Supplies, ITC Claimed  
and Net Tax Payable  
by taxpayer who opted  
for QRMP Schemes -  
Northern States

MON

25

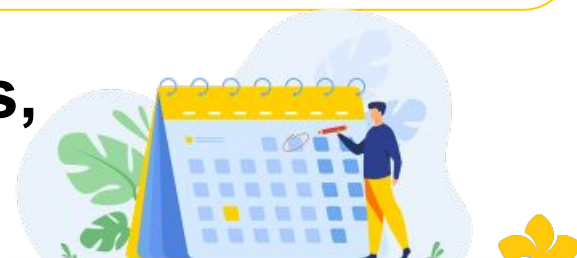
ITC-04 (Quarterly)

Summary of goods  
sent to/ received  
from a job-worker

**For More Details & Queries,  
please write to us @**



[info@tiareconsilium.com](mailto:info@tiareconsilium.com)



**TIARE**

Enabling Your Path to Success

# APR 2022 COMPLIANCE CALENDAR

## TDS / TCS

THU

07

Challan No.  
ITNS-281(Deposit of  
Tax Collected for  
March, 2022)

THU

14

-Form 16B (U/S194-IA  
for February, 2022)  
-Form 16C (U/S 194-IB  
for February, 2022)  
-Form 16D (U/S 194M  
for February, 2022)

SAT

30

-Form 26QB (U/S  
194-IA for Mar, 2022)  
-Form 26QC (U/S  
194-IB for Mar, 2022)  
-Form 26QD (U/S  
194M for Mar, 2022)

SAT

30

-Challan No.  
ITNS-281(Deposit of Tax  
Deducted for Mar, 2022)  
-Form 15G/15H (quarter  
ending Mar, 2022)  
-Form 26QD (U/S 194M  
for February, 2022)

## MCA

SAT

21

**Listed Company**

-Shareholding Pattern  
-Corporate Governance  
Report  
-Statement of Grievance  
Redressal Mechanism

FRI

30

**MCA**

MSME-1

SUN

30

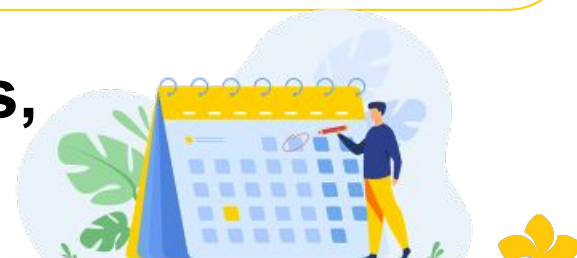
**Listed Company**

-Reconciliation of share  
capital audit report.  
-Share Transfer Agent.  
-Transfer or transmission  
or transposition of  
securities.  
-Initial Disclosure  
requirements for large  
entities.

**For More Details & Queries,  
please write to us @**



[info@tiareconsilium.com](mailto:info@tiareconsilium.com)



**TIARE**

Enabling Your Path to Success

## LABOUR LAWS & OTHERS

FRI

15

**ESIC**

E-Payment Challan

FRI

15

**EPF**

Electronic Challan cum  
Return(ECR)(PF)

WED

20

**PT-Karnataka**

Form 5A-Professional  
Tax Return

**For More Details & Queries,  
please write to us @**



[info@tiareconsilium.com](mailto:info@tiareconsilium.com)



# TIARE

Enabling Your Path to Success